



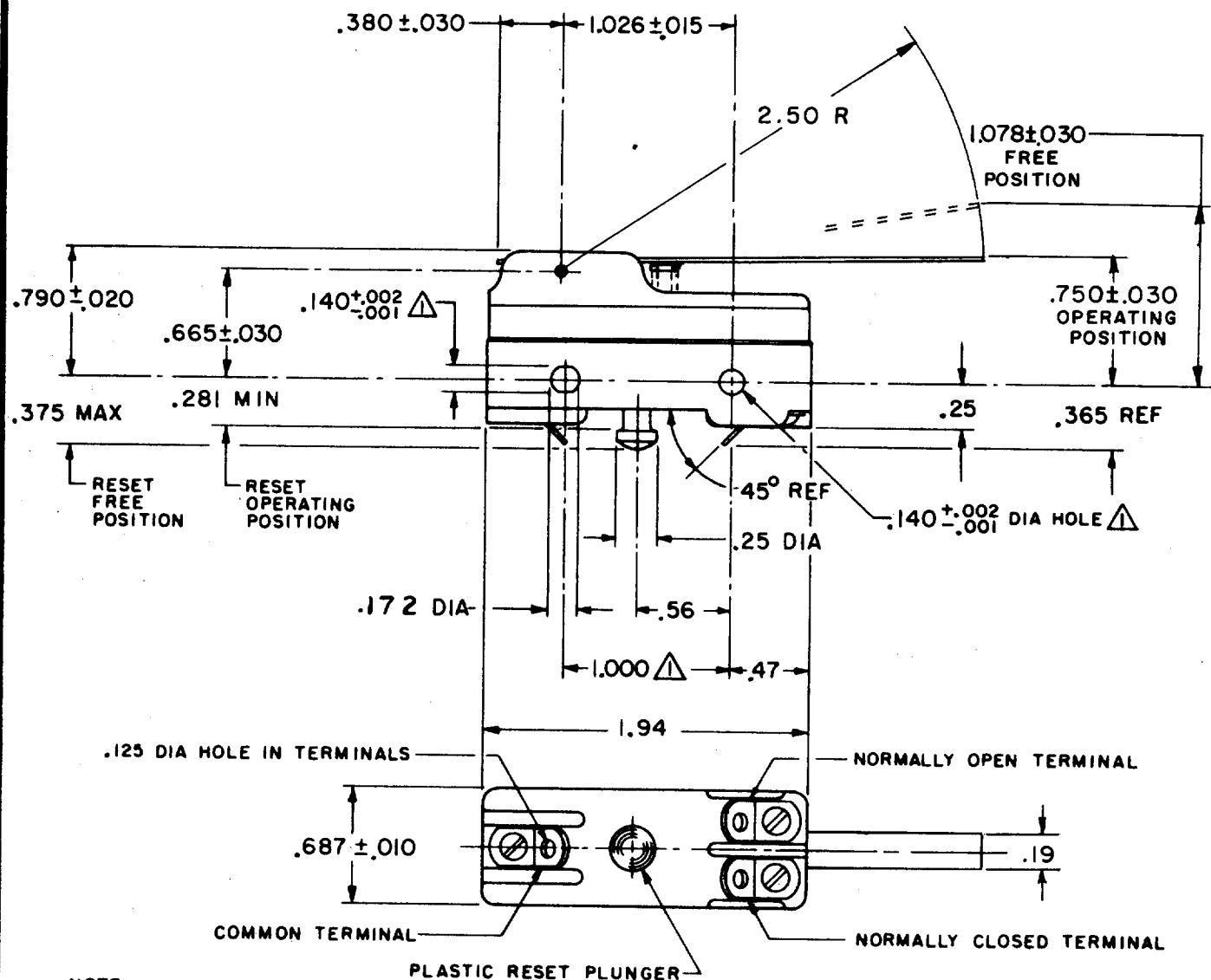
MICRO SWITCH
 FREEPORT ILLINOIS
 A DIVISION OF HONEYWELL
 FED. MFG. CODE 91929

SWITCH - BASIC

CATALOG LISTING

BZ-RW80X

BZ-RW80X
 M
 DRAWING NUMBER
 9
 ISSUE
 REVISIONS
 A CO16325 M B F 2 AUG 62
 B CO77590 DLT 9 JUN 94
 CHECK
 2 AUG 62
 CHECK
 2 AUG 62
 DRAWN
 M B F 2 AUG 62
 CHECK
 2 AUG 62
 FO-50378



NOTE -
 ▲ - MOUNTING HOLES WILL ACCEPT PINS OR SCREWS OF .139 MAX DIA ON $1.000 \pm .002$ CENTERS

THIS DRAWING COVERS A PROPRIETARY ITEM AND IS THE PROPERTY OF MICRO SWITCH, A DIVISION OF MINNEAPOLIS-HONEYWELL REGULATOR CO. THIS DRAWING IS NOT TO BE COPIED OR USED WITHOUT THE APPROVAL OF MICRO SWITCH.

CHARACTERISTICS	ELECTRICAL DATA		SCALE FULL
OPERATING FORCE — — — — 2 1/4 OZ MAX	CONTACT ARRANGEMENT SINGLE POLE DOUBLE THROW MAINTAINED CONTACT	BREAK DISTANCE .070 MIN	DO NOT SCALE PRINT
OVERTRAVEL — — — — .219 MIN			UNLESS OTHERWISE SPECIFIED DIMENSIONS ARE IN INCHES
RESET CHARACTERISTICS		UNDERWRITERS' LAB. INC. LISTED RATING -L67- 15A-125, 250, OR 480 VAC 1/4 HP-125 VAC; 1/2 HP-250 VAC 1/2 A-125 VDC; 1/4 A-250 VDC	TOLERANCES ARE:
OPERATING FORCE — — — — 2-10 OZ			ONE PLACE (.0) ±.030 TWO PLACE (.00) ±.015 THREE PLACE (.000) ±.005 ANGLES ±
OVERTRAVEL — — — — .015 MIN			WEIGHT

